



Pyramid Healthcare

AN INTEGRATED BEHAVIORAL HEALTHCARE SYSTEM

2023-2024

ANNUAL REPORT

A LEADER IN CLIENT-FOCUSED CARE

Pyramid Healthcare's shared commitment to meeting increasing behavioral health challenges with high-quality, client-focused care has established our diversified family of companies as respected leaders in substance use and eating disorders treatment, mental health recovery, and autism support.

Our History

Since 1999, consistent innovation and excellence in care has expanded Pyramid Healthcare's integrated behavioral healthcare system to include 16 companies, over 3,100 team members, 80+ treatment programs—and 7 autism schools—conveniently located across Connecticut, Pennsylvania, New Jersey, Maryland, Virginia, North Carolina, Georgia, and Ohio.

Our Treatment

Pyramid Healthcare's full continuum of in-person and telehealth behavioral healthcare treatment programs and specialty and education services makes it easy and convenient for adults and adolescents to receive necessary level of care assessments, withdrawal management, inpatient, outpatient, halfway housing, Medication Assisted Treatment (MAT), alumni support, and autism education regardless of location or recovery status.

Our Staff

Pyramid Healthcare is a dynamic organization dedicated to providing critical career and growth opportunities for team members who are passionate about providing personalized, effective, life-changing care every day.



ABOUT US

Founded in 1999
16 partner providers
80+ locations in 8 states
3,100+ employees
CARF accredited

BOARD OF DIRECTORS

Jonathan Wolf
Keith Farrow
Christopher Crosby
Linda Rosenberg, MSW
David Wennberg, MD

CORPORATE OFFICE

271 Lakemont Park Boulevard
Altoona, PA 16602

(814) 940-0407

pyramidhc.com



2024 DEVELOPMENT PROJECTS

Pennsylvania Expansions & Relocations

- York Inpatient Expansion
- Altoona Halfway House Relocation

West Virginia Expansions

- Acquisition of Mountaineer
- Development of Medicaid Residential Services in Martinsburg

Recovery Support Services Expansions

- Centers of Excellence, Peer Support, & Housing in PA
- Model Expanded to Additional States with Medicaid Residential Services

Veterans Support

- Increase Access & Specialized Programming for Veterans



CONTENTS

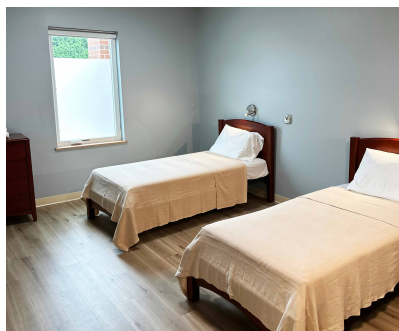
York residential Expansion	4
Tradition House Relocation	5
West Virginia Expansion.....	5
Recovery Support Services	6
Veterans Services.....	6

YORK RESIDENTIAL EXPANSION

The York inpatient program expansion includes the addition of withdrawal management/detox services, ASAM level 3.5 for females and 53 new beds for a total of 93 residential drug and alcohol treatment beds in the program.

“Pyramid Healthcare is pleased that the recent expansion of beds and services at our York, PA program enables even more men and women from York County and the surrounding area who are struggling with diagnosed substance use and co-occurring disorders to receive the lifesaving treatment they need to achieve long-term recovery. We have been gratified by the support of the community in helping develop this facility as a tangible resource in the struggle against the opioid epidemic,” commented Jonathan Wolf, founder and CEO of Pyramid Healthcare.

Located at 5849 Lincoln Highway, York, PA 17406, the residential treatment program is currently welcoming adult clients. Pennsylvania Medicaid and most commercial insurances are accepted. To refer or learn more, contact the Admissions Department at (888) 694-9996 or visit pyramidhealthcare.com/york-residential.



TRADITION HOUSE RELOCATION

We have moved!

Our new, expanded location is now in the Sylvan Building at 1311 13th Street, Altoona, PA 16601.



WEST VIRGINIA EXPANSION

Pyramid Healthcare now provides substance use treatment in two locations in West Virginia, treating adults struggling with all stages of addiction.

Mountaineer Treatment Center

Detox, residential and outpatient treatment



3094 Charles Town Road, Kearneysville, WV 25430

Martinsburg Treatment Center

Residential treatment



64 Boy Scout Road, Hedgesville, WV 25427

RECOVERY SUPPORT SERVICES

Our Vision

At Pyramid Healthcare, our vision is an integrated approach that combines clinical treatment programming with consistent support and engagement by other individuals in long-term recovery. This “Recovery 360” approach provides clients with the opportunity to meet with Certified Recovery Specialists (CRS) throughout their stay, and even after graduating from our programs.

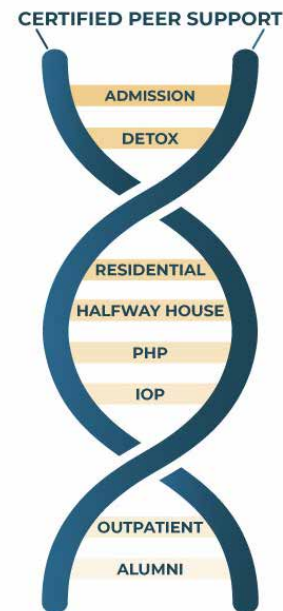
Peer Recovery Support Services

Our programs are staffed with Certified Recovery Specialists who are paired with clients when they begin treatment. Once an individual reaches out to Pyramid Healthcare for help and enters one of our programs, a Certified Recovery Specialist follows up promptly to check in and gather information about what resources this person currently has or may need in order to proceed.

Clients are Offered Recovery Services:

- When entering any level of care
- When transitioning to another level of care
- Upon discharge from a service
- When choosing not to participate in a recommended level of care through our admissions process
- When struggling with attending treatment

Recovery Support Services



Recovery is in our DNA

VETERANS SERVICES

Many veterans face mental health disorders, substance abuse and other behavioral health changes as a direct or indirect result of military service. Our Pyramid Military Therapy & Recovery Program, available at our Altoona Detox & Residential Treatment Facility, provides a curriculum specifically for military veterans who might be experiencing the negative impact on their behavioral health during or after their transition back to a civilian lifestyle.

Through a combination of individual psychotherapy, family therapy, peer support services and integrative treatment methods, we aim to help reduce symptoms and improve veterans' quality of life. Clients learn to adopt healthy coping mechanisms while navigating life's persistent challenges, establish a sense of safety and prepare for the rest of their life.



pyramidhc.com | (814) 940-0407