



Pyramid Healthcare

AN INTEGRATED BEHAVIORAL HEALTHCARE SYSTEM

2024-2025 ANNUAL REPORT

A LEADER IN CLIENT-FOCUSED CARE

Pyramid Healthcare's shared commitment to meeting increasing behavioral health challenges with high-quality, client-focused care has established our diversified family of companies as respected leaders in substance use and eating disorders treatment, mental health recovery, and autism support.

Our History

Since 1999, consistent innovation and excellence in care has expanded Pyramid Healthcare's integrated behavioral healthcare system to include 10 companies, over 3,100 team members, 70+ treatment programs—and 7 autism schools—conveniently located across Connecticut, Georgia, Maryland, New Jersey, North Carolina, Pennsylvania, Virginia and West Virginia.

Our Treatment

Pyramid Healthcare's full continuum of in-person and telehealth behavioral healthcare treatment programs and specialty and education services makes it easy and convenient for adults and adolescents to receive necessary level of care assessments, withdrawal management, inpatient, outpatient, halfway housing, Medication Assisted Treatment (MAT), alumni support, and autism education regardless of location or recovery status.

Our Staff

Pyramid Healthcare is a dynamic organization dedicated to providing critical career and growth opportunities for team members who are passionate about providing personalized, effective, life-changing care every day.



ABOUT US

Founded in 1999
10 partner providers
70+ locations in 8 states
3,100+ employees
CARF accredited

BOARD OF DIRECTORS

Jonathan Wolf
Keith Farrow
Christopher Crosby
Linda Rosenberg, MSW
David Wennberg, MD

CORPORATE OFFICE

271 Lakemont Park Boulevard
Altoona, PA 16602

(814) 940-0407

pyramidhc.com



FY 2024-2025 DEVELOPMENT PROJECTS

Maryland Expansions

- Prince George’s County Launch

North Carolina Expansions

- Jacksonville Launch
- ACTT Team Expansions

New Jersey Relocations

- Parsippany Relocation
- Cranford Relocation

Pennsylvania Expansions & Relocations

- Altoona Relocation & Expansion
- Erie Relocation
- Providence House Launch

Virginia Expansions

- New River Valley Expansion
- Newport News ACTT Services Launch
- Henrico County Groundbreaking



CONTENTS

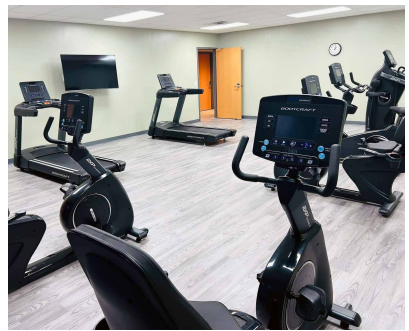
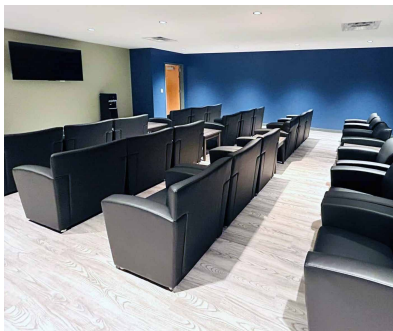
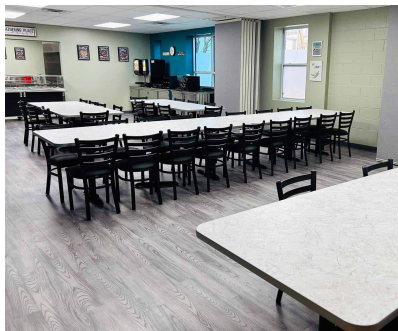
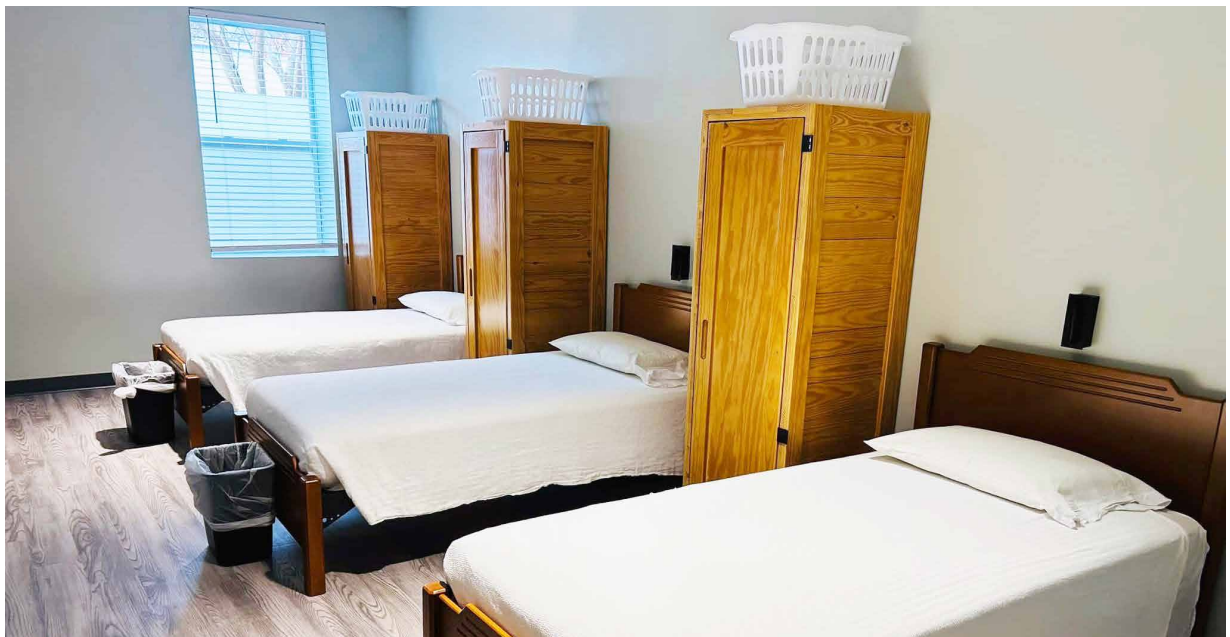
Prince George’s County Launch	4
Erie Outpatient Relocation	5
Parsippany Outpatient Relocation	5
Jacksonville Outpatient Launch	6
Henrico County Groundbreaking	6

PRINCE GEORGE'S COUNTY LAUNCH

In January 2025, our Prince George's County facility opened its doors to become our fifth location in the state of Maryland. Located in Bowie, the licensed and accredited Prince George's County program provides individualized inpatient treatment for adult men and women struggling with substance use and co-occurring mental health disorders.

Designed to meet the specific needs of each individual client, our program is staffed by experienced medical professionals, a counseling team led by master's level clinicians, and peer support specialists. Withdrawal management, residential treatment, medication-assisted treatment (MAT) and psychiatric services are available.

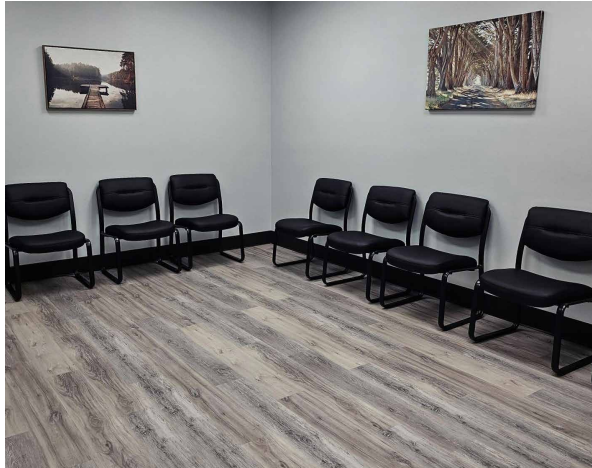
The residential treatment program at 3000 Lottsford Vista Road, Bowie, MD 20721 is currently welcoming adult clients. Maryland Medicaid and most commercial insurances are accepted. To refer or learn more, contact the Admissions Department at (301) 997-1300 or visit pyramidhealthcare.com/prince-georges-county.



ERIE OUTPATIENT RELOCATION

We have moved!

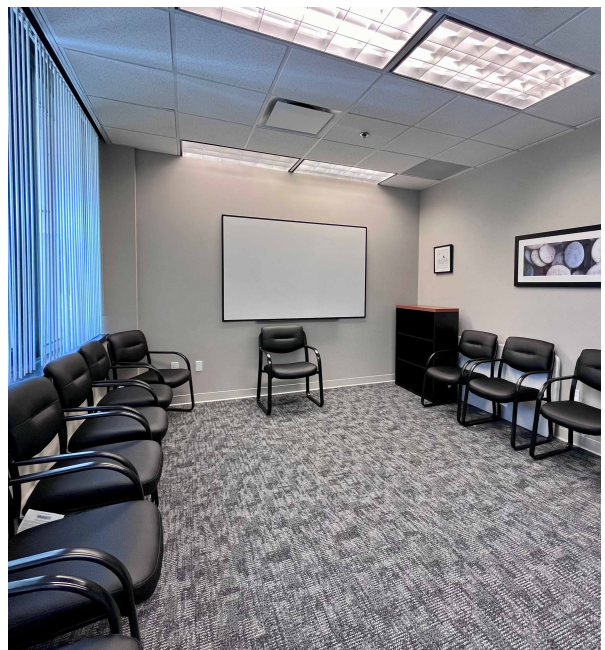
Our new location is now at 1325 West 26th Street,
Erie, PA 16508.



PARSIPPANY OUTPATIENT RELOCATION

We have moved!

Our new location is now at 99 Cherry Hill Road, 2nd
Floor, Suite 220, Parsippany, NJ 07054.



JACKSONVILLE OUTPATIENT LAUNCH

Pyramid Healthcare launched an outpatient treatment center in Jacksonville, NC, in January 2025. Located at 255 Williamsburg Parkway, Suite A, this location offers SACOT (substance abuse comprehensive outpatient treatment), SAIOP (substance abuse intensive outpatient program), medication-assisted treatment (MAT) and medication management. Assertive Community Treatment Team (ACTT) services are available throughout Onslow, Pender, Crave, Jones and Carteret counties.

Our Jacksonville facility accepts Medicaid, Trillium Health Resources (NC Medicaid), Blue Cross Blue Shield of North Carolina and other commercial insurance providers.



HENRICO COUNTY GROUNDBREAKING

On June 3, 2025, Pyramid Healthcare held a groundbreaking ceremony to mark the construction of our newest detox and residential substance use disorder treatment center in the state of Virginia. In partnership with Henrico County, the facility's development is a response to the overwhelming need to serve area residents struggling with addiction while alleviating the burden on local hospitals and the criminal justice system.

Located at 3808 Nine Mile Road, the Henrico facility will offer a secure, structured environment designed to support 60 individuals with comprehensive withdrawal management and ASAM level 3.5 residential treatment services.

With an anticipated opening in spring 2026, the Henrico County treatment center will expand Pyramid Healthcare's continuum of care in Virginia, alongside our existing facilities in Newport News and Radford.





pyramidhc.com | (814) 940-0407